



## LED Meteor Lights Specification (APP-LSX354W10-10)

### 1. Features:

- ✧ Low power consumption, vivid lighting color
- ✧ Defending Electricity Leakage
- ✧ Easy to install, maintenance free
- ✧ Big viewing angle, long lifespan
- ✧ Green product, compliant with ROHS and CE.

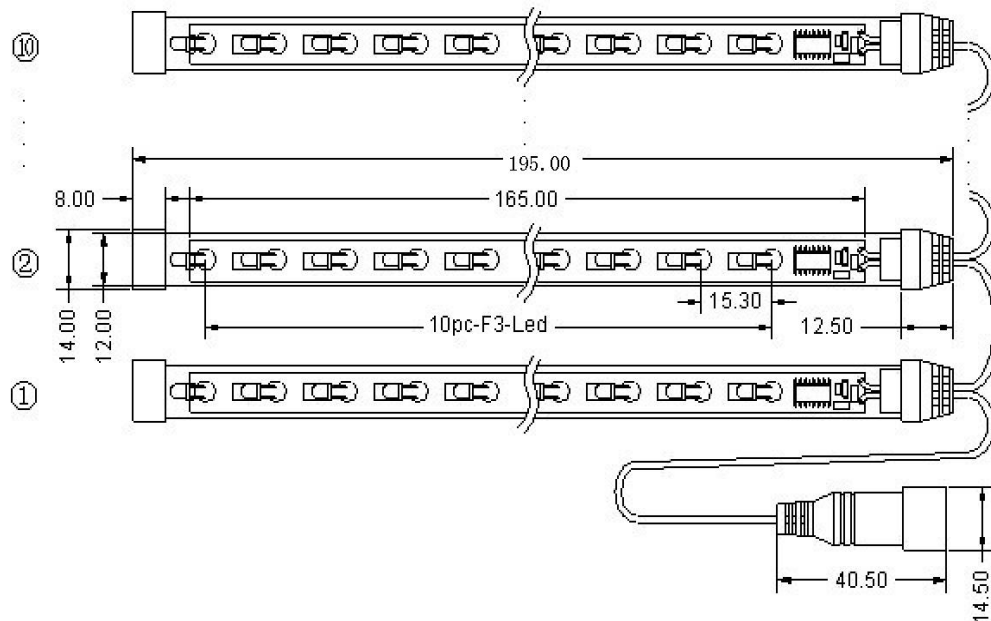
### 2. Application:

- ✧ Christmas decoration

Picture:



### 3. Package Dimensions (mm):



1. All dimensions are in millimeters
2. Tolerance is 0.5 mm unless otherwise noted
3. Voltage supply: 5V DC
4. Power adapter: AC 110V /220V to DC 5V is included.



# APPLED ELECTRONICS ENTERPRISES CORPORATION

TEL: (02) 2545881 / 6224308 FAX: (02) 2545881 MOBILE: (0917) 8878378 / (0922) 8878374

STALL NO. 2M-15 168 MALL SOLER ST., BINONDO, MANILA, PHILIPPINES 1006

URL: [WWW.LED.PH](http://WWW.LED.PH)

EMAIL: [APPLED888@YAHOO.COM.PH](mailto:APPLED888@YAHOO.COM.PH)

#### 4. APP-LSX354W10-10 Characteristics:

LIGHT EMITTING DIODE LAMPS			
Absolute maximum ratings		(Ta=25°C)	
	Symbol	Value	Unit
Forward current	If	30	mA
Reverse voltage	Vf	5	V
Power dissipation	Pd	110	mW
Operating temperature range	Top	-25~+80	°C
Storage temperature range	Top	-30~+80	°C
Peak pulsing current ( 1/8 duty f=1KHz)	If	125	mA

#### 5. Absolute Maximum Rating at TA=25°C:

Part Number	Emitting Color	Input Voltage	Wattage	Waterproof Degree	LED Quantity	Wavelength (nm)	Luminous flux (Lm/set)		Continuous Connect (set)
							MIN	MAX	
APP-LSX354 R10-10	Red	DC5V	1.65 W	IP 35	100 pcs	620-635	9	20	4
APP-LSX354 G10-10	Green		1.65 W	IP 35	100 pcs	515-530	8	17.5	4
APP-LSX354 B10-10	Blue		1.65 W	IP 35	100 pcs	465-475	10	22.5	4
APP-LSX354 Y10-10	Yellow		1.65 W	IP 35	100 pcs	585-595	17.5	27.5	4
APP-LSX354 W10-10	Pure White		1.65 W	IP 35	100 pcs	/	85	110	4
APP-LSX354 WW10-10	Warm White		1.65 W	IP 35	100 pcs	/	80	105	4



# APPLED ELECTRONICS ENTERPRISES CORPORATION

TEL: (02) 2545881 / 6224308 FAX: (02) 2545881 MOBILE: (0917) 8878378 / (0922) 8878374

STALL NO. 2M-15 168 MALL SOLER ST., BINONDO, MANILA, PHILIPPINES 1006

URL: [WWW.LED.PH](http://WWW.LED.PH)

EMAIL: [APPLED888@YAHOO.COM.PH](mailto:APPLED888@YAHOO.COM.PH)

## 6. Test pattern:



## 7. Packaging:

Net (g)	Inner White Box Size (CM)	Qty/box	Outer Carton Size (CM)	Qty/Carton	Gross Weight (kg)
300	26.5*8.5*4.0	1 set	60*30*35	60 sets	18

